

# Conquest™ CONDENSING WATER HEATER

AquaPLEX® Storage Tank and Heat Exchanger (unlined duplex alloy) • 130 Gallon Tank

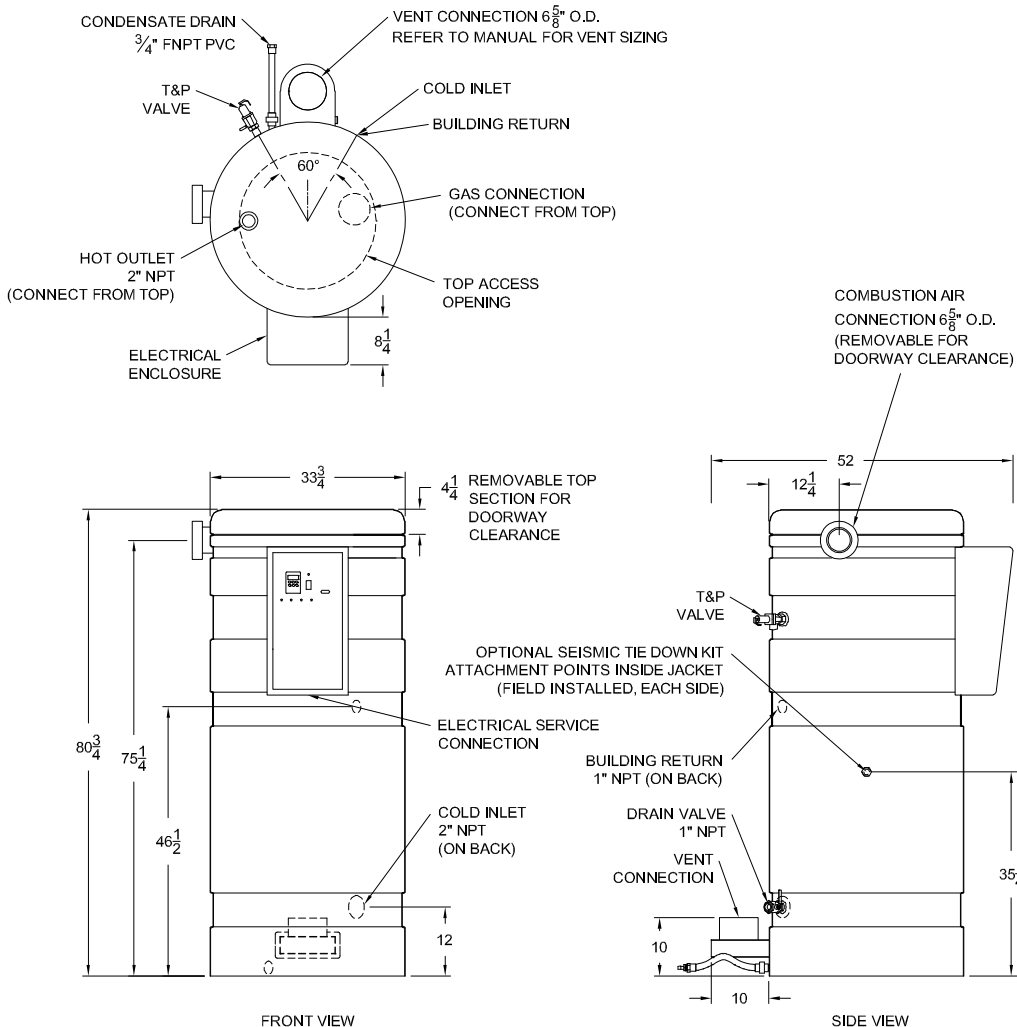
MODEL ▼	INPUT BTU	Modulating	RECOVERY GPH ①		GAS CONNECTION NPT	VENT DIAMETER (ETL listed for longer vents with larger dia.)	OPERATING Weight (lbs)
			40°F to 120°F	40°F to 140°F			
40 L 130A-GCL	399,000	No	575	460	3/4	4" @ 80 eq. ft.	1800
50 L 130A-GCML	500,000	Yes	720	576	1	6" @ 100 eq. ft.	
60 L 130A-GCML	600,000	Yes	864	691	1	6" @ 100 eq. ft.	
70 L 130A-GCML	700,000	Yes	998	798	1	6" @ 100 eq. ft.	
80 L 130A-GCML	800,000	Yes	1128	903	1	6" @ 100 eq. ft.	

① Recovery efficiency based upon DOE 10 CFR 431.

Dimensions are in inches unless otherwise indicated.

For standard and optional equipment, refer to form PV 8293.

Empty weight is 680 pounds and shipping weight is 980 pounds (all models)



## Standard Electrical Service

120VAC, 1Ø, 60 Hz.  
All models < 11 amps.

## Venting

Use a Category IV PVC, CPVC or ETL, UL, ULC or CSA listed stainless steel or Polypropylene vent, minimum vent length 5 eq. feet, maximum vent length in equivalent feet varies by model number and vent diameter. Do not size vent based only upon connection diameter at the appliance. Refer to installation manual for sizing requirements.

## Inlet Combustion Air

Up to 100 eq. ft. using 6" PVC or galvanized vent pipe. Longer lengths, ETL listed with larger diameters, refer to installation manual.

## Gas Pressure - Natural

Minimum inlet flow pressure 3.5" W.C.  
Maximum static pressure 14" W.C.  
For LP gas, refer to installation manual.

## Minimum Clearance from Combustibles

Zero clearance from sides and rear, 24" from front, 15" from top. Can be installed directly on a combustible floor.

## Recommended Service Clearances

18" from all sides.

## Emissions

All models < 20 ppm NOx.

